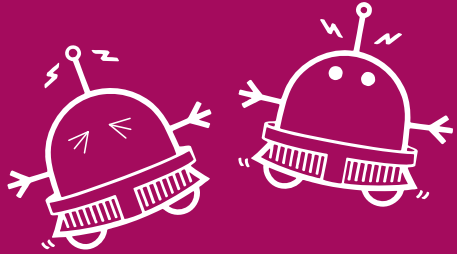




INTERNATIONAL ROBOT SUMO TOURNAMENT FINAL BATTLE!

JOIN US AT KOKUGIKAN, TOKYO



INTERNATIONAL ROBOT SUMO TOURNAMENT 2012

文部科学大臣杯・文部科学大臣賞争奪 第24回全日本ロボット相撲大会

All-Japan Robot Sumo Tournament

December 16 (Sun.), 2012

Gates open at 10:30 a.m.

Opening ceremony starts at 11:00 a.m.

At Ryogoku Kokugikan, Tokyo

In addition to the tournament, we are also having many other fun events!

You can join the events free of charge.

A cute robot will be on site after the thrilling urnament!

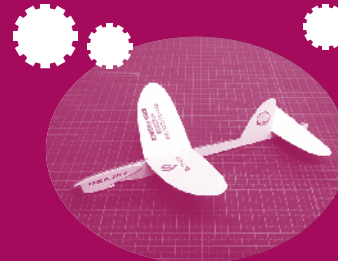
Communication Humanoid "PARLO" Show

The lovely "PARLO" robot will talk to you in a light-hearted manner on the sidelines of the heated battles.



Paper Airplane Craft Class

Our staff will give you lessons on how to make proper paper airplanes from the very first step. Both parents and children can enjoy creating arts and manufacturing goods in the class.



Would you like to eat Chankonabe, a hotpot dish popular with sumo wrestlers at the mecca for sumo wrestling?

We will prepare Chankonabe, fish, meat and vegetable stew traditionally serve to sumo wrestlers, as a snack for the audience.

The Kokugikan building will be filled with excitement from the sumo bouts by tough sumo robots from all over the world as well as tasty Chankonabe served by sumo wrestlers! *Please be aware that the number of Chankonabe dishes is limited.



You may win a special gift!



Join our lottery to win some special gifts offered by our cosponsors and FUJISOFT Incorporated. You could win a laptop computer or a computer game. Try your luck to get an early Christmas present!

The rule is very simple. If your robot is out of the sumo ring, you lose.



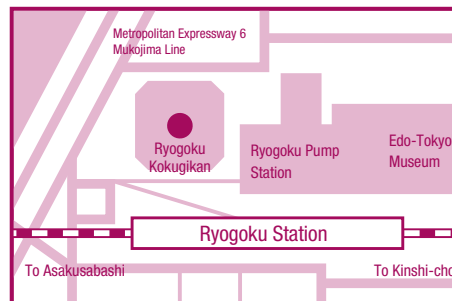
Admission is **Free**

With this leaflet, four people can enter the Kokugikan.

*If, in case, the venue is overcrowded, we may have to limit admission.

Access to Ryogoku Kokugikan

Opening Ceremony: from 11:00 a.m.
(The entrance opens at 10:30 a.m.)



Ryogoku Kokugikan

1-3-28 Yoko-ami
Sumida-ku, Tokyo

Four-minute walk from JR Ryogoku Station

[Approx. time from major stations by train] ■ From Tokyo St. to Ryogoku St.: 10 minutes ■ From Ueno St. to Ryogoku St.: 10 minutes ■ From Shinjuku St. to Ryogoku St.: 17 minutes

FUJISOFT Incorporated

All Japan Robot Sumo Tournament Secretariats

<http://www.fsi.co.jp/SUMO/>

For inquires: C/O FUJISOFT Akihabara Bldg.
3 kanda-neribeicho, Chiyoda-ku, Tokyo 101-0022, Japan
Tel: 03-5209-6001 (within Japan or +81-3-5209-6001 from overseas)
Fax: 03-5209-6085 (within Japan or +81-3-5209-6085 from overseas)

To learn more about the Robot Sumo Tournament, please take a look at the following website.

<http://www.fsi.co.jp/SUMO/>